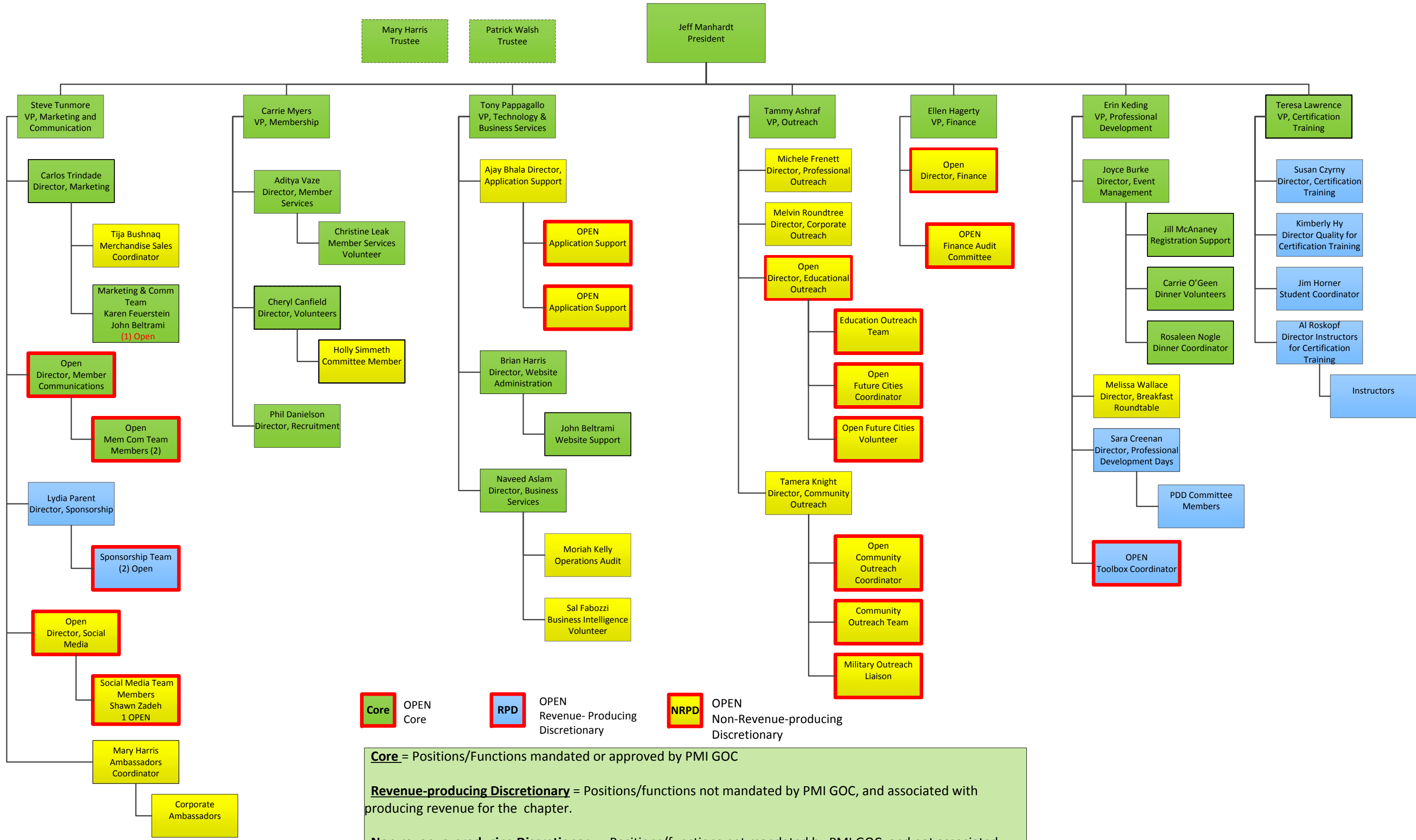


# PMI Buffalo Board Organization Chart – 2018



Core OPEN Core  
RDP OPEN Revenue- Producing Discretionary  
NRPD OPEN Non-Revenue-producing Discretionary

**Core** = Positions/Functions mandated or approved by PMI GOC  
**Revenue-producing Discretionary** = Positions/functions not mandated by PMI GOC, and associated with producing revenue for the chapter.  
**Non-revenue-producing Discretionary** = Positions/functions not mandated by PMI GOC, and not associated with producing revenue for the chapter.