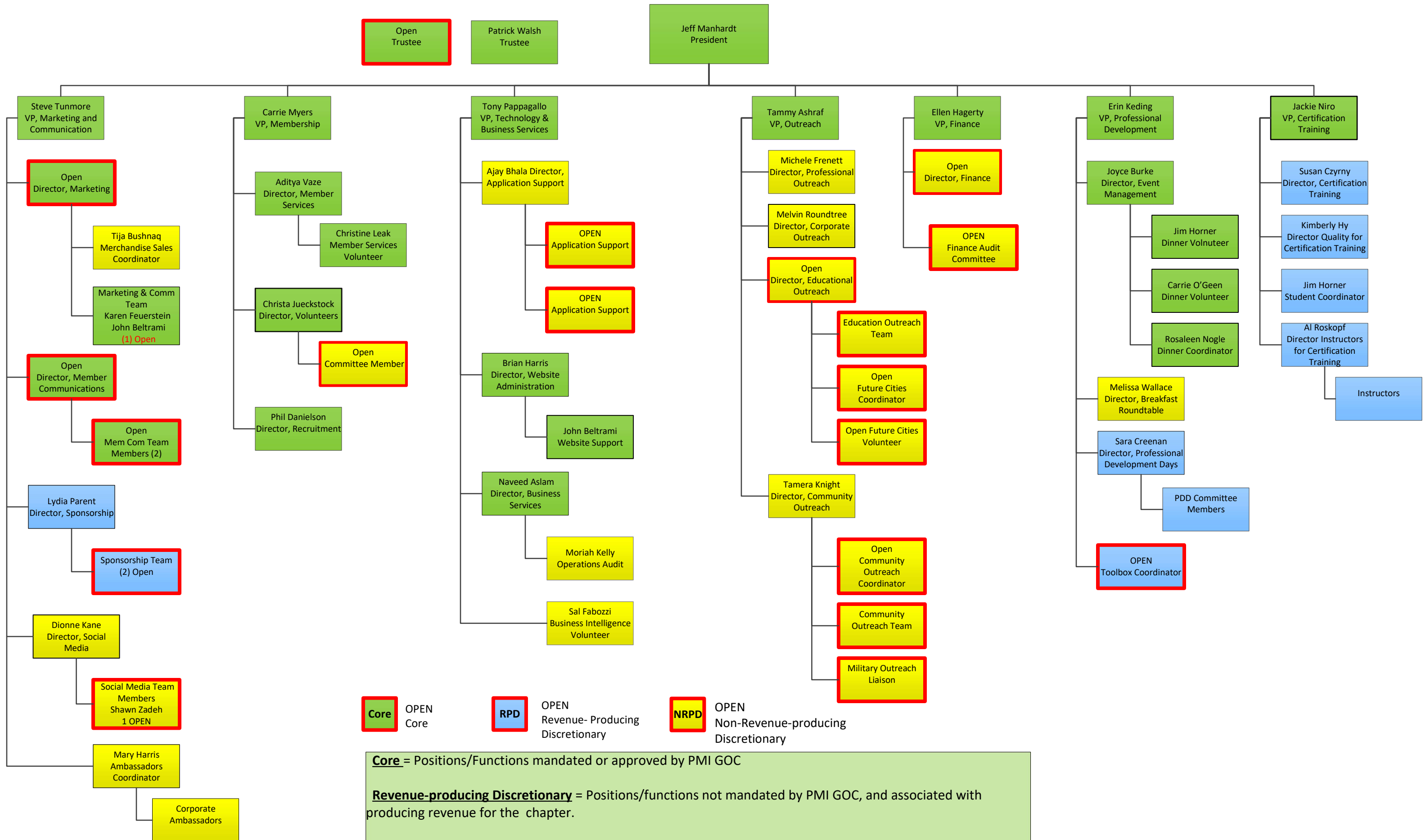


PMI Buffalo Board Organization Chart – 2019



Core OPEN Core

RPD OPEN Revenue- Producing Discretionary

NRPD OPEN Non-Revenue-producing Discretionary

Core = Positions/Functions mandated or approved by PMI GOC

Revenue-producing Discretionary = Positions/functions not mandated by PMI GOC, and associated with producing revenue for the chapter.

Non-revenue-producing Discretionary = Positions/functions not mandated by PMI GOC, and not associated with producing revenue for the chapter.